



## GENERAL SERVICES



**S-2international** LLC  
SERVICE DELIVERED WITH HEART

### **Who are we and why choose S-2international LLC over others?**

We are a single-source provider and recognized leader in quality, third-party transportation management.

We excel in managing time & service sensitive ground shipments using our virtual fleet of cargo vans, sprinter vans and straight trucks.

More specialized solutions such as constant surveillance/high security, lift gate, pad-wrapped and tradeshow transportation are also in our service offerings.

Our experience is rooted in the time-definite shipping segment which makes our teams' approach unique.

Every shipment is managed as time critical, with a commitment to in-transit visibility, proactive communication and on-time performance.

Nearly every customer we have had since 2004 is still working with us today! We work hard to develop strong partnerships based on loyalty and trust. We sincerely hope to add you to our list of satisfied customers. We are certain, once your team gets a taste of our customized service, they will **LOVE** it!

### **For Quotes**

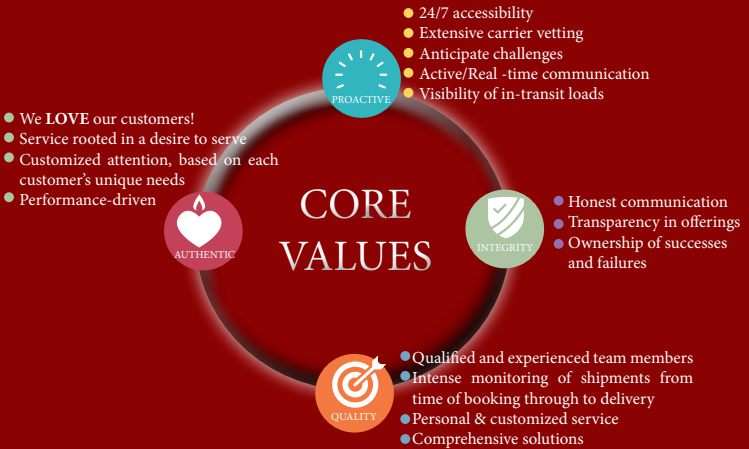
**Contact us @678.432.9502**  
**operations@s-2international.com**

[www.s-2international.com](http://www.s-2international.com)

## What services do we offer?

We realize our customers want more than **JUST** price and service. They want a partner who understands their business. We make it our business to learn your business so we can develop customized solutions for your specific needs.

- Expedite-Vans/Sprinters/Straight Trucks/Tractors
- White Glove Services, Constant Surveillance, Driver Assist
- Truckload Management
- Drayage, Rail, and Intermodal
- On-line booking & tracking
- US, Canada, and Mexico
- Arrangement of Air Charters



**S-2international, LLC.**  
 395 McDonough Pkwy.  
 McDonough, GA 30253  
 Mailing Address:  
 5916 East Lake Pkwy. Ste. 311  
 McDonough, GA 30253  
 Phone: (678) 432-9502  
 Email: [operations@s-2international.com](mailto:operations@s-2international.com)

